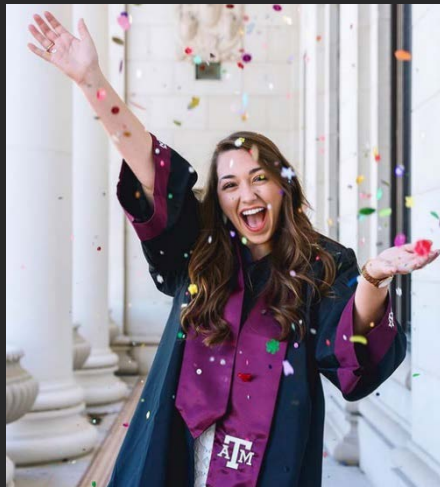




# TEXAS A&M ESSENTIALS

provost.tamu.edu

November 2017



## STUDENT RECRUITMENT AND ADMISSIONS

- Texas A&M University is highly competitive with more than 60,000 applications submitted each year, across freshmen, transfer, and graduate admissions.
- Freshmen admission occurs through one of three ways:
  - Automatic admission under the state’s Top 10% law
  - Automatic academic admits must be in the Top 25% of their class and achieve SAT or ACT score minimums
    - **New SAT:** Total score of at least 1360 with at least 620 Math and 660 Evidence-Based Reading and Writing (EBRW); or
    - **Old SAT:** Composite score of at least 1300 (Math and Critical Reading) with at least 600 Math and 600 Critical Reading; or
    - **ACT:** Composite score of at least 30 with at least 27 Math and 27 English
  - Holistic, full-file review

### FALL 2017

	APPLICANTS	ADMITTED	ENROLLED
Freshman	36,391	25,129	11,205
Transfer	6,205	3,147	2,558
Graduate	19,430	7,981	3,889

Data Source: [accountability.tamu.edu](http://accountability.tamu.edu); Fall 2017 unofficial Admissions data

## SPECIAL PROGRAMS

- **Texas College Advising Corps (Advise Texas):** Since Fall 2012, Texas A&M University has hired and placed 52 recent A&M graduates in high-need schools throughout the state. The advisors work hand-in-hand with high school students to help increase the matriculation of students into higher education.
- **Greater Texas Foundation Aggie Scholars:** Through a generous seven-year grant from the Greater Texas Foundation, Texas A&M offers scholarships and support services to students graduating from an Early College High School (ECHS) in Texas. This support is provided to help students successfully transition to college and ensure they are on a path towards completing their program on-time.
- **Knowledge is Power (KIPP) Partnership:** Since 2013, Texas A&M has been a KIPP partner university, with a goal of encouraging more students to attend Texas A&M. KIPP schools ([kipp.org](http://kipp.org)) focus on college readiness and foster a culture of excellence through innovative academic programs and high impact learning experiences.
- **POSSE:** Through a unique partnership with the POSSE foundation ([possefoundation.org](http://possefoundation.org)), Texas A&M has enrolled four cohorts of students to attend Texas A&M. Over eighty students from both Atlanta, GA and Houston receive support and services on campus to help foster student success at Texas A&M, all while keeping connected with their POSSE.

#### Office of Admissions

217 John J. Koldus Building  
1265 TAMU, College Station, TX 77843-1265  
979.845.1060  
[admissions.tamu.edu](http://admissions.tamu.edu)

## PROSPECTIVE STUDENT CENTER: HISTORY AND BACKGROUND

- Since 2004, Texas A&M University has operated Prospective Student Centers (PSC) throughout the state to provide admissions and financial aid information to high school students, parents, and counselors. Currently, we have more than 45 staff members operating in over 1,900 schools. [admissions.tamu.edu/advisors](http://admissions.tamu.edu/advisors)
- As part of the Vision 2020 diversity initiatives and to meet our commitment to Texas, the focus of the Office of Admissions is to work with underrepresented and first-generation students and assist them with admissions and financial aid processes to gain access to higher education.

## PSC SERVICES PROVIDED

- One-on-one admission and financial aid counseling
- High school visits, presentations and resource tables
- Scholarship search and application assistance
- Money and debt management
- Early outreach presentations and awareness programs
- Community Outreach: community leader luncheons, educational fairs and workshops, partnership with college access programs
- High School and PSC Scholarship Programs
- College campus visits
- Community College (transfer) partnerships in outreach

EVENT / ACTIVITY	EVENTS	PEOPLE CONTACTED
Admissions/ Financial Aid Presentations & Resource Tables	1,466	91,000
Application/FAFSA Workshops	384	11,400
Community Initiatives	282	53,280
Early Outreach Initiatives	48	5,400
High School Visits	1,951	79,700
TACRAO/ College Fairs	414	121,600
TAMU Campus Visits	124	4,000
Transfer Programs	86	9,237
<b>TOTALS</b>	<b>4,755</b>	<b>375,835</b>

Source: Fall 2017 Admissions Presentation Database and Scholarships and Financial Aid unofficial data



## RESOURCES

- Appelt Aggeland Visitor Center [visit.tamu.edu](http://visit.tamu.edu)
- Office of Admissions [admissions.tamu.edu](http://admissions.tamu.edu)
- Course Catalog [catalog.tamu.edu](http://catalog.tamu.edu)
- Scholarships [scholarships.tamu.edu](http://scholarships.tamu.edu)
- Financial Aid [financialaid.tamu.edu](http://financialaid.tamu.edu)

